



# Heat Smart Hawke's Bay

## FINANCIAL ASSISTANCE FOR INSULATION & HEATING

To make it easier to fit ceiling and underfloor insulation and clean heat devices in houses **built before 2000** Hawke's Bay Regional Council is offering homeowners a one-off grant or a top-up loan\* which is to be repaid over 10 years through your property's Rates.

## HOW TO GET STARTED

- Get in touch with an EECA service provider (the installer); find the list of approved installers on the ENERGYWISE™ website: [www.energywise.govt.nz](http://www.energywise.govt.nz), on Council's website: [www.hbrc.govt.nz](http://www.hbrc.govt.nz), or contact us for a copy of the list on 06 833 8080;
- The installer will assess your home free of charge and provide options to fit insulation and heating – you may want to get a quote from more than one installer;
- The installer will outline your funding options and help you to complete any application forms; the amount of funding assistance available to you will depend on whether your home is within an airshed (see maps over page), the age of the house, household income, and whether you or your tenant holds a Community Services Card;
- Your installer will let you know when funding has been approved so work can begin.

## FUNDING OPTIONS

Homeowners can access funding from **both** ENERGYWISE™ and Hawke's Bay Regional Council. To work out the funding assistance you qualify for use **Table A** if your house is inside an airshed or **Table B** for houses outside the airsheds – see over for maps and information.

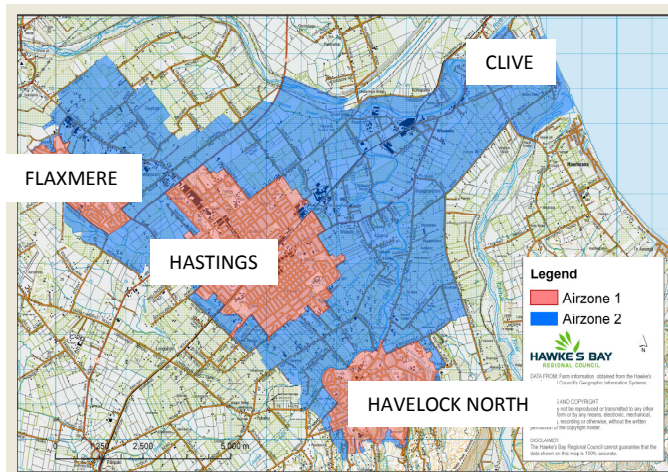
TABLE A Houses inside the Hastings & Napier airsheds		
HOMEOWNER TYPE	INSULATION SERVICE	CLEAN HEAT SERVICE
Community Services Card (CSC) holder	<b>ENERGYWISE™</b> Grant for 60% of total cost <b>HBRC</b> Top up loan + interest & fees	<b>ENERGYWISE™</b> Grant of \$1,200 <b>HBRC</b> Up to \$2,800 loan with 50% interest subsidy
Landlords where the tenant is a CSC holder	<b>ENERGYWISE™</b> 60% of total cost <b>HBRC</b> Top up loan + interest & fees	<b>ENERGYWISE™</b> Grant of \$500 <b>HBRC</b> Grant of \$700 OR up to \$3,500 loan + 50% int. subsidy
Household income under \$100,000	<b>ENERGYWISE™</b> 33% of total cost up to \$1,300 <b>HBRC</b> Top up loan + interest & fees	<b>ENERGYWISE™</b> Grant of \$500 <b>HBRC</b> Grant of \$700 OR up to \$3,500 loan + 50% int. subsidy
Household income over \$100,000	<b>ENERGYWISE™</b> 33% of total cost up to \$1,300 <b>HBRC</b> Top up loan + interest & fees	<b>ENERGYWISE™</b> Grant of \$500 <b>HBRC</b> Not covered by HBRC

TABLE B Houses outside the airshed areas		
HOMEOWNER TYPE	INSULATION SERVICE	CLEAN HEAT SERVICE
Community Services Card (CSC) holder (NB: Where the tenant is a CSC holder the landlord qualifies for a \$500 ENERGYWISE heating grant)	<b>ENERGYWISE™</b> Grant for 60% of the total cost <b>HBRC</b> Top up loan + interest & fees	<b>ENERGYWISE™</b> Grant of \$1,200 <b>HBRC</b> Not covered by HBRC
Non CSC holders	<b>ENERGYWISE™</b> 33% of the total cost up to \$1,300 <b>HBRC</b> Top up loan + interest & fees	<b>ENERGYWISE™</b> Grant of \$500 <b>HBRC</b> Not covered by HBRC

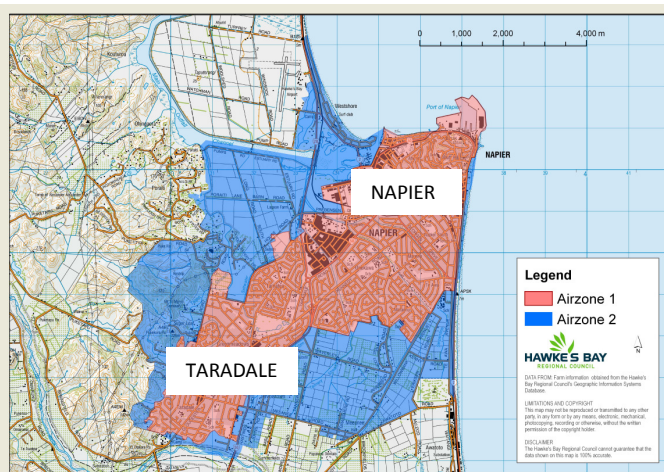
## THE AIRSHEDS

The Napier and Hastings Airsheds are divided into two Airzones. Airzone 1 covers the more densely populated urban areas of Hastings, Flaxmere, Havelock North, Napier and Taradale; these are the areas most affected by air pollution. Airzone 2 covers the remaining areas within the wider Airsheds. All homes within the Airsheds qualify for funding as an incentive to reduce air pollution in these areas, though only homes located inside Airzone 1<sup>1</sup> will be subject to the Council's burner and open fire phase out dates. More information about Hawke's Bay's targets for air quality can be found on the Regional Council's website, [www.hbrc.govt.nz](http://www.hbrc.govt.nz).

### Hastings airshed



### Napier airshed



## IMPORTANT POINTS

- All funding applications must be made through an EECA-contracted service provider (installer).
- Ceiling and underfloor insulation must be completed to EECA standards before funded clean heating can be installed.
- Clean heat devices include approved solid fuel wood burners, 4-star AGA-rated flued gas heaters, approved wood pellet burners and Energy Star qualified heat pumps.
- To qualify for Regional Council clean heat funding you must be replacing an existing non-compliant woodburner or open fire. The burner emission limit for new and replacement burners in Airzone 1 of the Hastings Airshed is 1.0 g/kg for all freestanding burners and inserts burners without a wetback, and 1.5 g/kg for insert burners with a wetback. In Airzone 2 of the Hastings Airshed, and Airzone 1 and 2 of the Napier Airshed the burner emission limit is 1.5 g/kg.
- You may apply to both ENERGYWISE™ and Hawke's Bay Regional Council for funding assistance.
- A landlord is eligible for the grant or loan where the tenant is a Community Services Card holder.
- One Regional Council non-repayable grant or loan\* is allowed per household and can include a combination of, or be limited to, insulation and/or clean heat services. The value of the loan, interest and fees is attached to the property's rates and repaid over a 10 year period by monthly A/P; all figures include GST.

## FOR MORE INFORMATION

Hawke's Bay Regional Council's Heat Smart info line: 06 833 8080

[www.hbrc.govt.nz](http://www.hbrc.govt.nz)

[www.energywise.govt.nz](http://www.energywise.govt.nz)

**heat**smart

<sup>1</sup> On properties less than 2 hectares in size.

For the purposes of the Heat Smart Programme the Hawke's Bay Regional Council 'top up loan' will take the form of a Council funded installation service provided to the Ratepayer and recovered through a targeted rate mechanism.